

Bestway®



OWNER'S MANUAL

www.bestway-global.com

www.bestway-service.com

Shanghai

Bestway Inflatables & Material Corp.
No.3065 Cao An Road,
Shanghai, 201812, China
Tel: 86 21 6913 5588
Fax: 86 21 5913 8383
E-mail: info@bestway-shanghai.com

Hong Kong

Bestway (Hong Kong) International Ltd.
Suite 713, 7/Floor, East Wing, Tsim Sha Tsui Centre,
66 Mody Road, Kowloon, Hong Kong
Tel: 852 2997 7169
Fax: 852 2997 7869
E-mail: info@bestway-hongkong.com

Europe

Bestway (Europe) S.r.l.
Via Resistenza 5,
20098 San Giuliano M.se (Mi) - Italy
Tel: 39 02 9884 881
Fax: 39 02 9884 8828
E-mail: info@bestway-europe.com

Central & South America

Bestway Central & South America Ltda
Salar Ascotan 1282, Parque Enea,
Pudahuel, Santiago, Chile
Tel: 562 2365 0315
Fax: 562 2365 0323
E-mail: info@bestway-southamerica.com

U.S.A.

Bestway (USA) Inc.
3249 E. Harbour Drive, Phoenix, Arizona 85034,
United States of America
Tel: 1 480 838 3888
Fax: 1 480 304 3349
E-mail: sales@bestway-northamerica.com

Australia

Bestway Australia Pty Limited
Unit 10/71-83 Asquith Street,
Silverwater, NSW 2128, Australia
Tel: 61 2 9037 1388
Fax: 61 2 9737 9423
E-mail: info@bestway-australia.com

Owner's manual

Warning

IMPORTANT SAFETY INSTRUCTIONS

Read the manual and follow the instructions relating to safety tips, correct and complete product assembly, setting into service, use and maintenance.

For your own safety, always heed the advice and warnings in these instructions. Non-compliance with these operating instructions may expose you to serious danger or death. Only use the product in the places and conditions for which it is intended.

Stand-up Paddling is a dangerous sport. Use of this product exposes the user to unexpected risks, dangers and hazards.

User should realize and understand these risks. The use of this product implies the respect of the safety instructions described in the manual.

Do not exceed the maximum recommended number of persons. Regardless of the number of persons on board, the total weight of persons and equipment must never exceed the maximum recommended load.

Do not use the product if you are under the influence of alcohol, drugs or medications.

Life saving devices such as life jackets and buoys should be pre-inspected and used at all times. Always wear a helmet when using this product.

Always paddle with an experienced partner when using this product.

Tell your sail routes and time schedule to your partner.

Check the weather forecast first to know the marine environment and weather conditions before starting. Bad weather and marine environment is very dangerous.

Never use this product in conditions that are beyond your ability (such as, but not limited to, high surf, riptides, currents or river rapids)

Use the product near the shore and beware of natural factors such as wind, tides and tidal waves. **BE AWARE OF OFFSHORE WINDS AND CURRENTS.**

Before every use, carefully inspect the product for signs of wear or leakage to ensure everything is in good condition. Please do not use the SUP if you find any damage.

Do not surf in unfamiliar water areas.

Beware of potential harmful effects of liquids such as battery acid, oil and petrol. These liquids may damage the product.

Inflate according to the rated pressure on the product or it will cause over inflation and/or an explosion.

Stay balanced. Uneven distribution of loads on the board may cause the board to overturn which could lead to drowning.

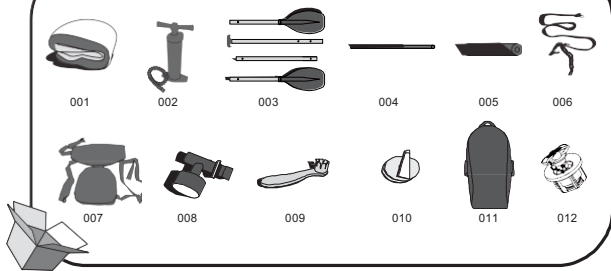
Know how to operate this product. Check your local area for information and/or training as needed. Inform yourself about local regulations and dangers related to surfing, boating and/or other water activities.

SAVE THESE INSTRUCTIONS

Technical Specifications

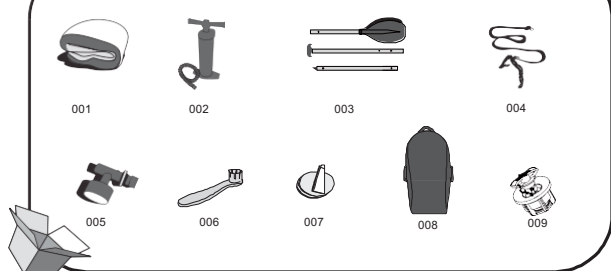
Item	Inflated size	Recommended Working pressure	Maximum load Capacity	Maximum number Of persons
65065 65066	2.85 m x 76 cm x 10 cm (9'4" x 30" x 4")	0.827bar (12psi)	75kg (165lb)	1 adult
65067 65068	3.05 m x 76 cm x 10 cm (10' x 30" x 4")	0.827bar (12psi)	90kg (198lb)	1 adult
65069 65070	3.05 m x 81 cm x 10 cm (10'x 32" x 4")	0.827bar (12psi)	95kg (209lb)	1 adult
65071 65072	3.20 m x 81 cm x 12 cm (10'6" x 32" x 5")	0.827bar (12psi)	120kg (265lb)	1 adult
65073 65074	3.30 m x 76 cm x 12 cm (10'10" x 30" x 5")	0.827bar (12psi)	115kg (254lb)	1 adult
65075 65076	3.35 m x 76 cm x 15 cm (11'x 30" x 6")	0.827bar (12psi)	145kg (320lb)	1 adult

#65065; #65067; #65069; #65071; #65073; #65075;



Part No.	Description	QTY	SPARE PART NO. (#65065)	SPARE PART NO. (#65067)	SPARE PART NO. (#65069)	SPARE PART NO. (#65071)	SPARE PART NO. (#65073)	SPARE PART NO. (#65075)
001	Surf Board	1	P6959	P6960	P6962	P6964	P6966	P6968
002	High Pressure Hand Pump	1	P3039	P3039	P3039	P3039	P3039	P3039
003	Oar	1	F6C298B	F6C298B	F6C298B	F6C298B	F6C298B	F6C298B
004	Footrest Tube	1	P5C319	P5C319	P5C319	P5C319	P5C319	P5C319
005	Footrest Foam	1	F6C211	F6C211	F6C211	F6C211	F6C211	F6C211
006	Safety Rope	1	P6C786	P6C786	P6C786	P6C786	P6C786	P6C786
007	Seat	1	F6C212	F6C212	F6C212	F6C212	F6C212	F6C212
008	Pressure gauge	1	P5C412	P5C412	P5C412	P5C412	P5C412	P5C412
009	Wrench	1	F6H189	F6H189	F6H189	F6H189	F6H189	F6H189
010	Glue & Polyester 3-ply patch	1	F1A155	F1A155	F1A155	F1A155	F1A155	F1A155
011	Travel Bag	1	F6C290	F6C290	F6C290	F6C290	F6C290	F6C290
012	Air valve cover	1	P6H971	P6H971	P6H971	P6H971	P6H971	P6H971

#65066; #65068; #65070; #65072; #65074; #65076



Part No.	Description	QTY	SPARE PART NO. (#65066)	SPARE PART NO. (#65068)	SPARE PART NO. (#65070)	SPARE PART NO. (#65072)	SPARE PART NO. (#65074)	SPARE PART NO. (#65076)
001	Surf Board	1	P6958	P6961	P6963	P6965	P6967	P6969
002	High Pressure Hand Pump	1	P3039	P3039	P3039	P3039	P3039	P3039
003	Oar	1	F6C299B	F6C299B	F6C299B	F6C299B	F6C299B	F6C299B
004	Safety Rope	1	P6C786	P6C786	P6C786	P6C786	P6C786	P6C786
005	Pressure gauge	1	P5C412	P5C412	P5C412	P5C412	P5C412	P5C412
006	Wrench	1	F6H189	F6H189	F6H189	F6H189	F6H189	F6H189
007	Glue & Polyester 3-ply patch	1	F1A155	F1A155	F1A155	F1A155	F1A155	F1A155
008	Travel Bag	1	F6C290	F6C290	F6C290	F6C290	F6C290	F6C290
009	Air valve cover	1	P6H971	P6H971	P6H971	P6H971	P6H971	P6H971

Installation

1. Spread out the surf board on level ground.

2. Inflate the board by unscrewing the cap of the air valve (Fig.1 Pos.1). Ensure that the inner spring valve is not depressed. If it is depressed (Fig.1 Pos. 2), press the spring valve and turn counter clockwise so the inner spring valve is in the correct position (Fig.1 Pos. 3). Attached the pressure gauge onto the hose and the hose to the inflate position on the high-pressure hand pump. Inflate the board to 0.827bar (12psi). After inflation, screw the cap of air valve (Fig.1 Pos. 4)

NOTE: If over-inflation occurs, press the spring valve to release air to an acceptable level and securely fasten the air valve.

NOTE: If the board is not in use and exposed under the sun, it may cause overexpansion and damage the board. Check the pressure and deflate slightly until the correct pressure is obtained.

NOTE: Pressure gauge is for inflation purpose only, and the value of the pressure gauge is just for reference, should not be used as a precision instrument.

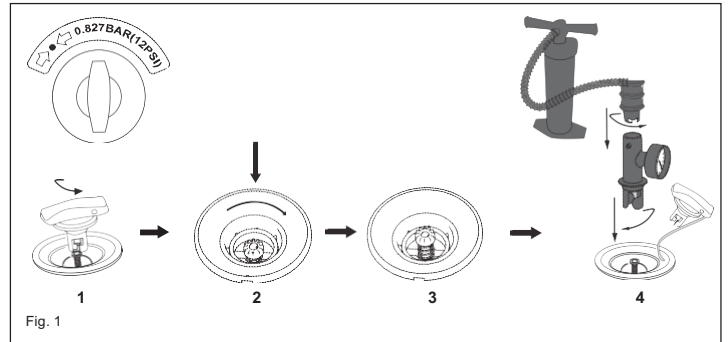


Fig. 1

3. Always carefully check and ensure the air valve is not leaking before using the surfboard. If the air valve is leaking, use the provided wrench to tighten the valve. To securely tighten the valve, hold the valve from the bottom of the surf board and turn the wrench clockwise. After you have ensured the valve is not leaking, tighten the cap to close the valve (Fig. 2). Attention: Don't adjust the air valve when the board is in use.

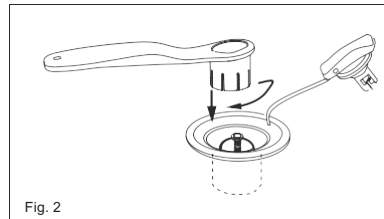


Fig. 2

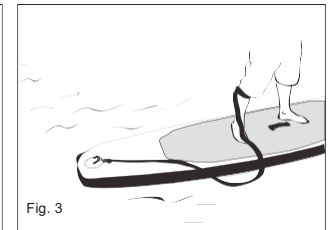


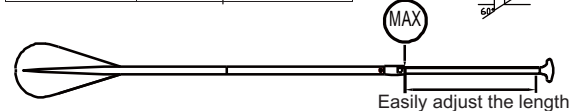
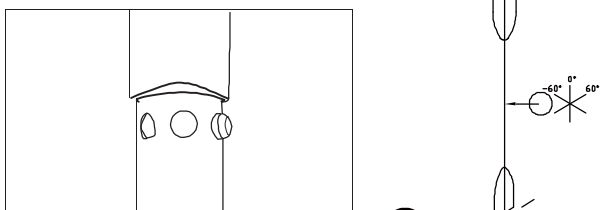
Fig. 3

4. Assemble the seat (included with product #65065, #65067, #65069, #65071, #65073, #65075 only). Connect the seat to the D-ring on the board. The seat can be adjusted to accommodate the footrest.

5. Attach the safety rope to the tow ring, and place the belt around your ankle (Fig.3).

Oar Installation

Connection with 3 positions will have different paddle angle. 60° is best for surfing, 0° is best for touring (For F6C298B oar only). Adjust the oar length according to your height. Take your height and add 8" for surfing length and 10" for touring length.



Storage

1. Deflate the board by unscrewing the cap of air valve, press the spring valve and turn clockwise.
2. Remove all the accessories from the board. Use a cloth to gently dry all surfaces. Keep the board and all accessories clean and dry.
3. Fold the board from front to back to remove additional air. You can also drain any remaining air using the high pressure hand pump by connecting the hose to the deflation port on the high-pressure hand pump.
4. Store in a cool, dry place and out of children's reach.

Repair

1. Clean and dry the area to be repaired.
2. Cut the provided PVC to the appropriate size. A 2.5cm x 2.5cm square is usually adequate.
3. Use the provided glue to coat one side of the patch. Make sure the glue is evenly distributed.
4. Wait 30 seconds and then place the patch with glue over the damaged area.
5. Smooth out any air bubble under the patch. Firmly press down on the patch for two minutes.
6. The board is once again ready for use. Repeat this process should further leaks occur.

Limited BESTWAY® Manufacturer's Warranty

The product you have purchased comes accompanied by a limited warranty. Bestway® stands behind our quality guarantee and assures, through a replacement warranty, your product will be free from manufacturer's defects that result in leaks.

To file a warranty claim, this form must be completed and submitted with a copy of your purchase receipt to your local Bestway After Sales Center. Please contact your local Bestway Aftersales Center before sending any documents – they will provide full instructions of what is needed for your claim. Bestway® will not replace any products deemed to have been neglected or having been used outside of the owner's manual guidelines.

Bestway's warranty covers manufacturing defects discovered whilst unpacking the product or during use as recommended within the user manual, this warranty applies only to product which must not have been modified by any third parties. The product must be stored and handled in accordance with the technical recommendations. This warranty is subject to the following limitations:

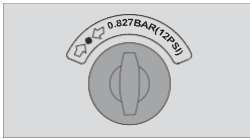
The warranty is valid for the original owner and only when this product is used for normal recreational activities and does not cover products used in rental, or school operations. If a product is deemed to be defective by Bestway, the warranty covers the repair or replacement of the defective product only. Bestway will not be responsible for any costs, losses, or damages incurred as a result of loss or use of this product. This warranty does not cover damage caused by misuse, abuse, neglect, normal wear and tear including, but not limited to, punctures, damage due to excessive heat exposure, damage caused by improper handling and storage, damage caused by use in waves or shore break, board breakage caused by falling or crashing in surf conditions, or damage caused by anything other than defects in material and workmanship.

This product must not be used in excess of the manufacturers recommended maximum load capacity. This warranty is void if any unauthorized repair, change or modification has been made to any part of the equipment.

Replacements and repairs don't extend the duration of the warranty. The date to be considered as the start of the warranty is only the one shown in the original receipt/purchase invoice. Visit www.bestway-service.com/warranty to determine the warranty details for your country or region.

This product is designed in accordance with standards for a specific use. Any modifications or transformations higher than that indicated by the manufacturer could result in serious risks for the user and will void the warranty.

Please copy the batch number placed near the air valve



Batch Number: _____

Date of purchase receipt: _____

TO: BESTWAY® SERVICE DEPARTMENT

DATE _____

Customer Code Number _____

FAX/E-MAIL/TEL: Please refer to your country according to the information you find on the back cover or on our website: www.bestway-service.com

Please provide your address details in full. **Note:** Incomplete address details will result in delayed shipments.

Bestway reserves the right to charge for redelivery of undelivered packages where the recipient is at fault.

REQUIRED INFORMATION - PLEASE WRITE THE DELIVERY ADDRESS

Name: _____ Address: _____

Zip code: _____

Country: _____ City: _____

Mobile: _____ Telephone: _____

Fax: _____ E-mail: _____

Please Clearly Write Your Item Code: _____

- | | |
|--|--|
| <input type="radio"/> 65065 2.85 m x 76 cm x 10 cm (9'4" x 30" x 4") | <input type="radio"/> 65066 2.85 m x 76 cm x 10 cm (9'4" x 30" x 4") |
| <input type="radio"/> 65067 3.05 m x 76 cm x 10 cm (10' x 30" x 4") | <input type="radio"/> 65068 3.05 m x 76 cm x 10 cm (10' x 30" x 4") |
| <input type="radio"/> 65069 3.05 m x 81 cm x 10 cm (10' x 32" x 4") | <input type="radio"/> 65070 3.05 m x 81 cm x 10 cm (10' x 32" x 4") |
| <input type="radio"/> 65071 3.20 m x 81 cm x 12 cm (10'6" x 32" x 5") | <input type="radio"/> 65072 3.20 m x 81 cm x 12 cm (10'6" x 32" x 5") |
| <input type="radio"/> 65073 3.30 m x 76 cm x 12 cm (10'10" x 30" x 5") | <input type="radio"/> 65074 3.30 m x 76 cm x 12 cm (10'10" x 30" x 5") |
| <input type="radio"/> 65075 3.35 m x 76 cm x 15 cm (11' x 30" x 6") | <input type="radio"/> 65076 3.35 m x 76 cm x 15 cm (11' x 30" x 6") |

Description of problem

- Air leaking _____
- Item is incomplete, insert the name of the missing part or Please attach the page with the details of spare parts needed _____
- Others, please describe _____

IMPORTANT: ONLY THE DAMAGED PART WILL BE REPLACED, NOT THE COMPLETE SET.

Bestway reserves the right to request photographic evidence of defective parts, or to require the sending of the item for additional testing. In order to best assist you, we request all information you provide is complete.

VISIT OUR WEBSITE WWW.BESTWAY-SERVICE.COM TO BY SPARE PARTS, TO DOWNLOAD MANUALS, FAQ AND VIDEO, ALSO AVAILABLE ON OUR BESTWAY CHANNEL ON YOU TUBE.

Bestway®